



INDOFINE Chemical Company, Inc.

121 Stryker Lane, Bldg. 30, Suite 1 • Hillsborough, NJ 08844 • U.S.A.

Phone: (908) 359-6778 • FAX: (908) 359-1179

website: www.indofinechemical.com

e-mail: chemical@indofinechemical.com

CERTIFICATE OF ANALYSIS

Catalog Number: 06-1165

Product Name: **SCHIZANTHERIN A**

CAS Number: [58546-56-8]

Lot Number: 1603751

Chemical Formula: C₃₀H₃₂O₉

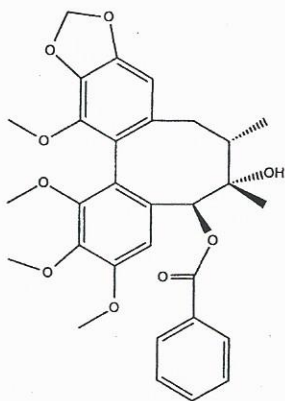
Molecular Weight: 536.57

Appearance: White powder

Loss on drying: 0.93%

Storage: Store in a cool, dry place. Protect from light.

Purity(HPLC): 99.31%





INDOFINE Chemical Company, Inc.

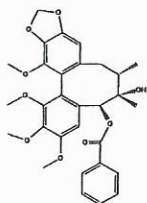
121 Stryker Lane, Bldg. 30, Suite 1 • Hillsborough, NJ 08844 • U.S.A.

Phone: (908) 359-6778 • FAX: (908) 359-1179

website: www.indofinechemical.com

e-mail: chemical@indofinechemical.com

HPLC ANALYSIS

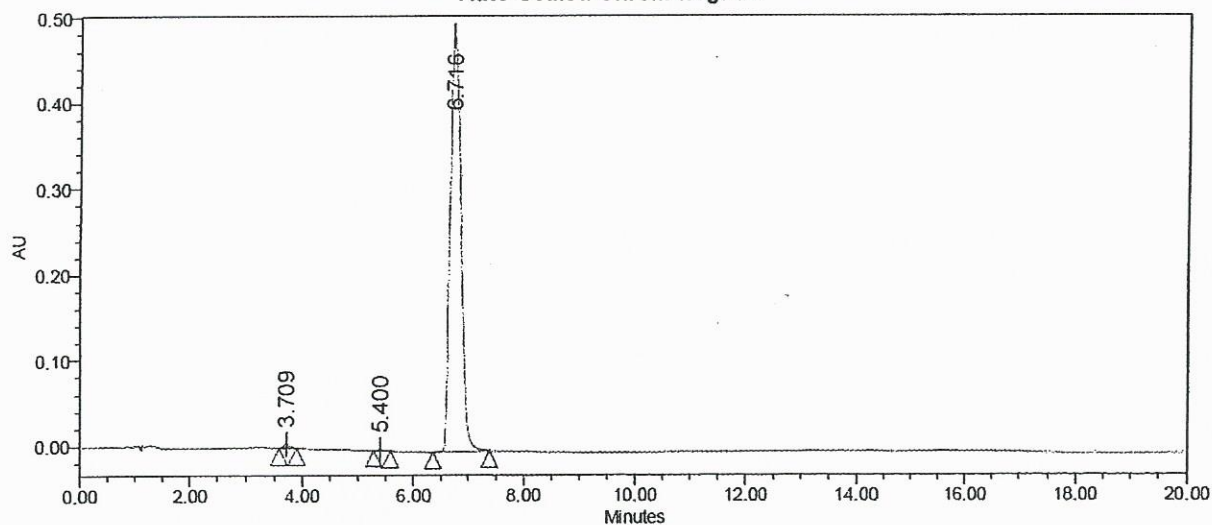


Catalog No.: 06-1165
Product Name: Schisantherin A
Lot No.: 1603751

SAMPLE INFORMATION

Sample Name:	Schisantherin A	Sample Set Name:	
Sample Type:	Unknown	Acq. Method Set:	Schisantherin A
Vial:	1:D,5	Processing Method:	Samples
Injection #:	1	Channel Name:	254.0nm
Injection Volume:	10.00 ul	Proc. Chnl. Descr.:	PDA 254.0 nm
Run Time:	20.0 Minutes		

Auto-Scaled Chromatogram



Peak Results

Name	RT	Area	% Area	USP Plate Count	USP Resolution
1	3.709	37848	0.56	3118.41	
2	5.400	8686	0.13	1001.45	7.43
3	6.716	6712683	99.31	5496.54	4.42